

Oughtibridge Primary School

FS2
Bulletin

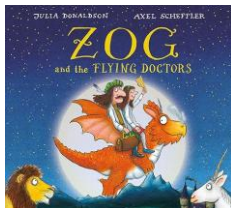
Spring Term 1

Our topic is...

I Wonder
who could
help me?

English

In English this half term, we will be learning and writing about the story Zog and the Flying Doctors and writing about people who help us.



Mathematics

We are continuing to follow NCETM maths and will be working on subitising, counting, composition and comparing numbers. Also 2d shape and patterns.



In Reading this term the children will be reading Super Stories. We will choose one story each week and look closely at the background knowledge around the story, the vocabulary and then what happens in the story. This is early years reading comprehension.

In Phonics this term we will be continuing to consolidate our single letter sounds and learn special friends. We will be applying our sound knowledge into reading words.

Dress Up Day

On **Monday 9th February** we are asking your child to come dressed in an outfit that represents a career they wish to have when they grow up.

Foundation Subjects

We will be learning about the role of people who work in the Emergency services and how they can help us. We will be learning about how to stay healthy through eating a healthy diet and exercise.

**Understanding
the
world**

We will be learning about how to persevere and tackle challenges. We will set ourselves a mini challenge for the half term.

PSED

We will be working through a ball skills unit. We will work on throwing, receiving, bouncing, catching and dribbling balls.

**Physical
Development**

We will be learning about primary colours and natural artwork in the style of James Brunt.

**Expressive
Arts
and
Design**

Uniform Guidance

Please ensure all items are labelled with your child's name:

- Sweatshirts should be navy blue.
- Trousers should be full length, in navy blue, plain black or dark grey.
- Shorts should be dress shorts in navy blue, plain black or dark grey
- Polo shirts should be white or navy blue.
- Skirts/pinafores should be navy blue, plain black or dark grey.
- Gingham dresses should be blue and only worn in the summer months.
- Footwear should be black shoes or totally black trainers.

Wow Days and Trips

**Visitors to our
classroom from:**

Different emergency
services professionals

Signs of Winter Walk

Thursday 15th January

Reminders

Your child should come to school in P.E. kit every Tuesday.

Forest School will be every other Friday afternoon, please bring their forest school kit in each week.

School opens at 8.40am. Pupils need to be in school for 8.50am.