

Oughtibridge Primary School

Y6
Bulletin

Autumn Term

Our topic is...



English

In English this half term, we will be studying the novel 'Letters from the Lighthouse'.

Firstly, we will revise the components of a sentence and grammatical terms using when writing cohesively.

We will then move onto composing a narrative based on our novel (Letters from the Lighthouse) which is inspired by events from WW2.

Finally, we will create a short historical report using a formal tone so children can showcase all their WW2 knowledge.

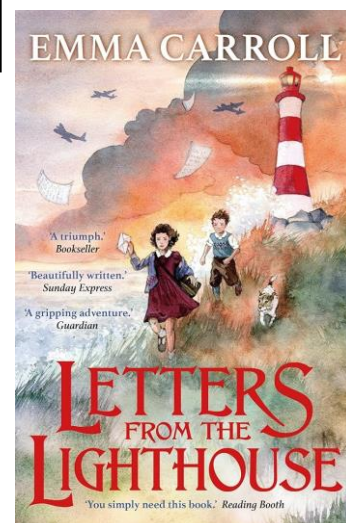
Mathematics

In Maths, we will regularly revisit and practise the children's multiplication knowledge using a range of methods.

Our first mathematical concept is place value where children will explore numbers up to the value of 10 million.

We will then revisit, explore and develop the four operations: addition, subtraction, multiplication and division, using both concrete materials and mathematical problem solving questions.

We use the first half term to consolidate the Y6's maths knowledge before introducing new, trickier concepts.



In Science, the children will be exploring both light and electricity. We will build and investigate different circuits and look closely at particularly components. In light, we will focus on how light travels and understand how shadows change. Throughout our science lessons, we will be developing children's scientific enquiry skills through discussions and investigations.

In Computing, we will be focussing on exploring how data is transferred over the internet. Y6 will initially focus on addressing, before they move on to the makeup and structure of data packets. We will then look at how the internet facilitates online communication and collaboration, and we will complete shared projects online and evaluate different methods of communication. Finally, we will learn how to communicate responsibly by considering what should and should not be shared on the internet.

Reminders

Your child should come to school in P.E. kit for indoor (Thursday) and outdoor (Friday) P.E.
School opens at 8.40am. Pupils need to be in school for 8.50am.

Foundation Subjects

World War Two	History
Christians and how to live	R.E.
Listen, appraise, perform: Happy by Pharrell Williams	Music
Athletics and football	P.E.
Our hobbies	Spanish
Using templates inspired by Banksy.	Art
Is there such thing as normal?	PSHE

Wow Days, Trips and Key Dates

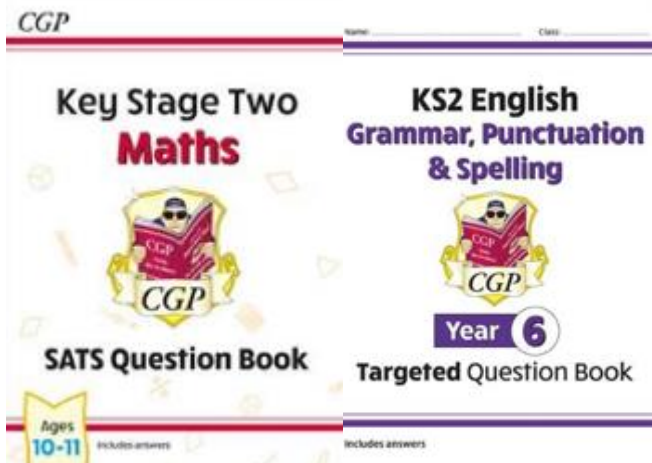
Eden Camp – A working, World War Two museum - 15/10/25
Science Wow Day – Exploring the importance of glass recycling, with a team from Amazelab - 12/11/25
Pantomime – ‘Snow White and the Seven Dwarfs’ - 10/12/25

Home Learning

Children are expected to read 5 times at home. This is to be logged in their reading record and signed by an adult.

To practise their spellings 7 times on Spelling Shed (their logins are stuck in their reading records).

They will also be given set pages to complete from the revision guides for both maths and literacy home learning. These pages will also be posted on Class Dojo and will be written on MD and BB's whiteboards each week.



Uniform Guidance

Please ensure all items are labelled with your child's name:

- Sweatshirts should be navy blue.
- Trousers should be full length, in navy blue, plain black or dark grey.
- Shorts should be dress shorts in navy blue, plain black or dark grey
- Polo shirts should be white.
- Skirts/pinafores should be navy blue, plain black or dark grey.
- Gingham dresses should be blue and only worn in the summer months.
- Footwear should be black shoes or totally black trainers.